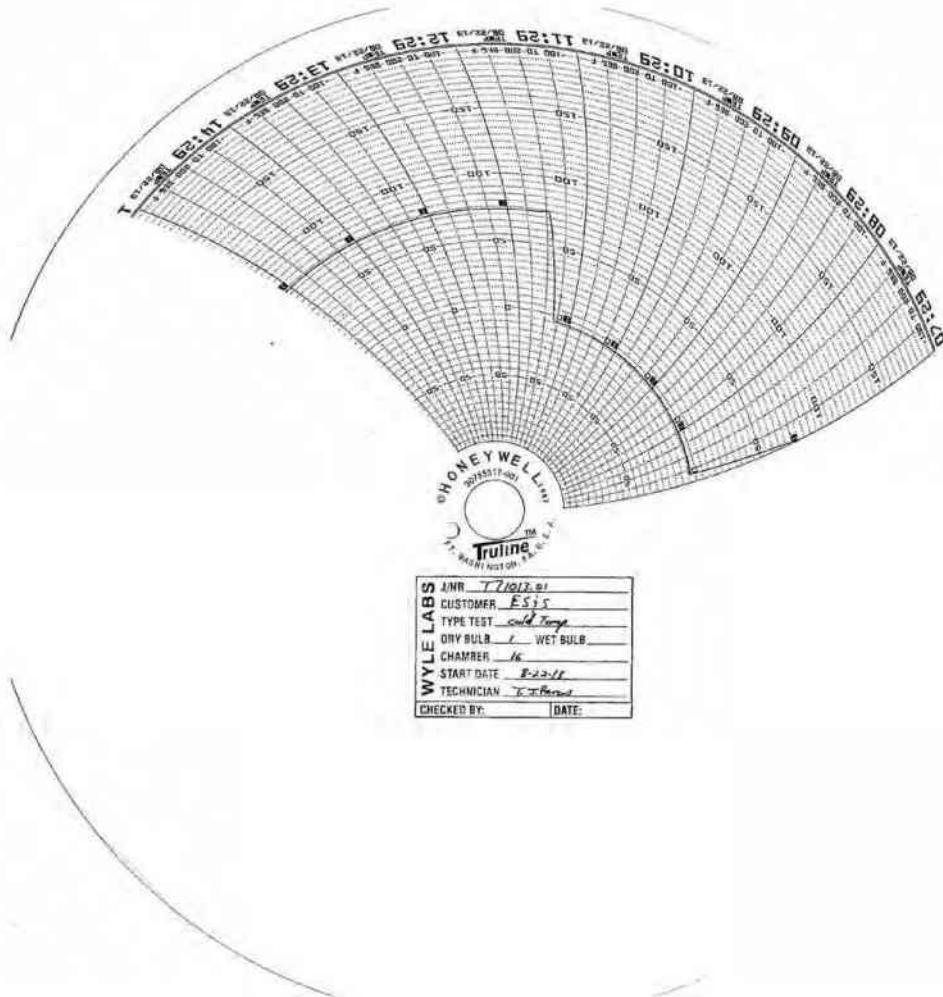


ATTACHMENT C
NON-OPERATING ENVIRONMENTAL TEST DATA

WYLE LABORATORIES, INC.
Huntsville Facility

LOW TEMPERATURE TEST DATA

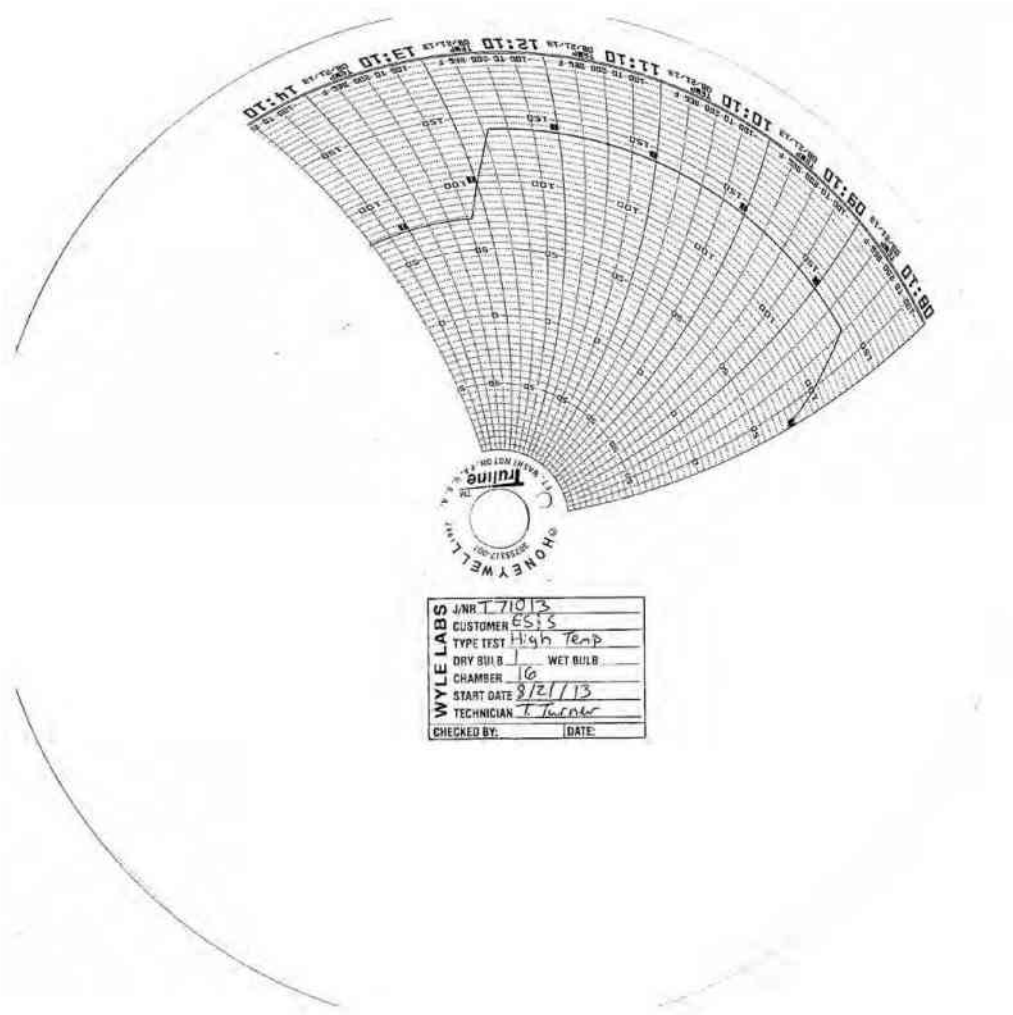
WYLE LABORATORIES, INC.
Huntsville Facility



WYLE LABORATORIES, INC.
Huntsville Facility

HIGH TEMPERATURE TEST DATA

WYLE LABORATORIES, INC.
Huntsville Facility



WYLE LABORATORIES, INC.
Huntsville Facility

WYLE LABORATORIES, INC.
Huntsville Facility

VIBRATION TEST DATA

WYLE LABORATORIES, INC.
Huntsville Facility

VIBRATION TEST DATA SHEET

Customer ES&S Spec. DS200 Hardshell & DS200 Plastic Case
 Job No. T71013.01 Method Part No. Specimen Temp. Ambient
 GSI Yes No Procedure SIN Photo Yes No

Date	Time	Axis	Famp (F)	SINUSOIDAL				RANDOM			TOTAL Accel (gms)	Test Time (min)	COMMENTS	NAME
				Freq (cps)	Disp (in)	Accel (g)	Freq (cps)	PSD (in ² /Hz)	Stpe (in/Out)					
08/24/13	13:40	Vert	Ampl				10	0.0013				Run#1 Basic Transportation Common Carrier Vibration		
							20-30	0.0065						
							76	0.0002						
							70-120	0.0018						
							500	0.0001						
							30-50	0.0050				Run#2 Basic Transportation Common Carrier Vibration		
							120	0.0005						
							120-200	0.0002						
							240	0.0100						
							340	0.0002						
							300	0.0015						
										740	30			

Job No. T71013.01 Report No. 08/24/13 Date 9/5/13
 Signed [Signature] Approved [Signature]

Page 1 of 2
 Job No. T71013.01
 Report No. 08/24/13
 Date 9/5/13

VIBRATION TEST DATA SHEET

ID No.

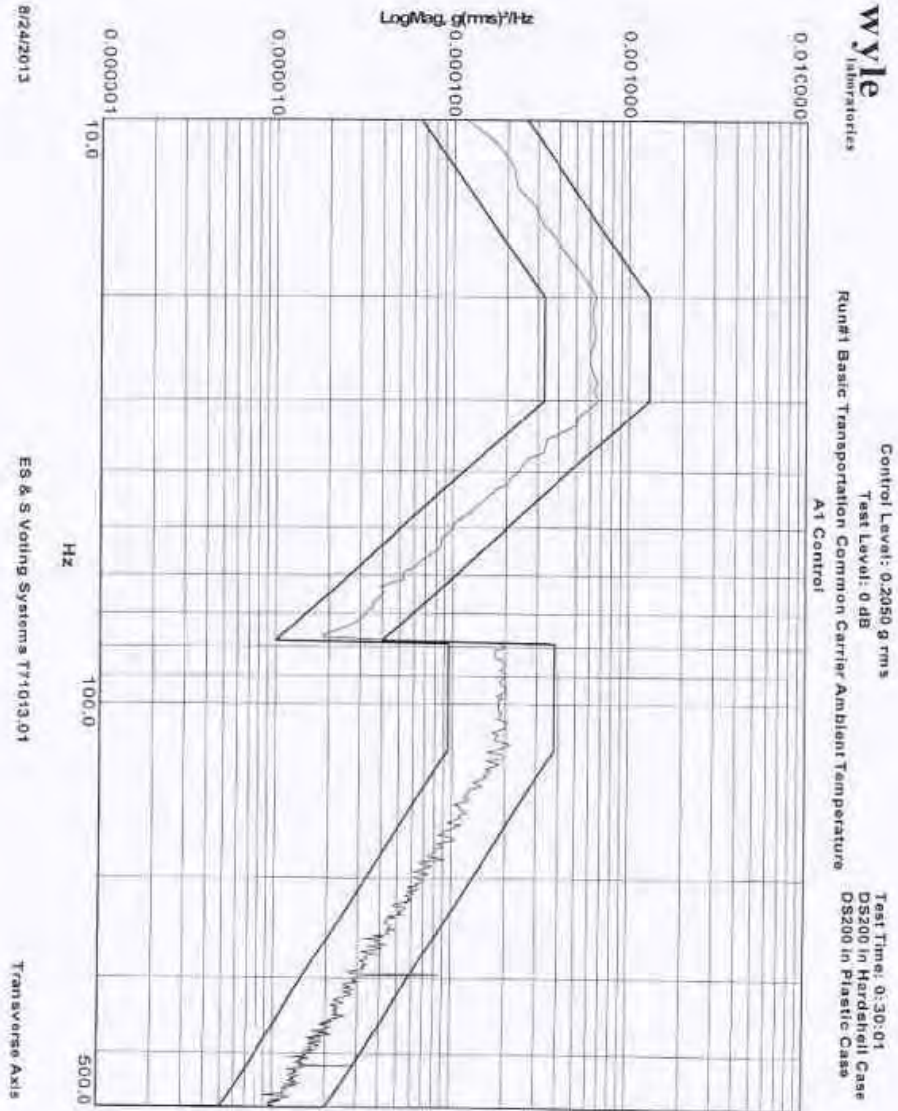
Date	Time	Axis	Temp (F)	SINUSOIDAL				RANDOM			TOTAL		TEST REQUIREMENT	COMMENTS	NAME
				Freq (cps)	Disp (in)	Accel (g)	Freq (cps)	PSD (g ² /Hz)	Slope (dB/Oct)	Accel (gms)	Tot Time (min)				
08/24/13	16:12	Vert	Amb				10-40	01500			1.06	30	Run#3 Basic Transportation Common Carrier Vibration		

WI-1028

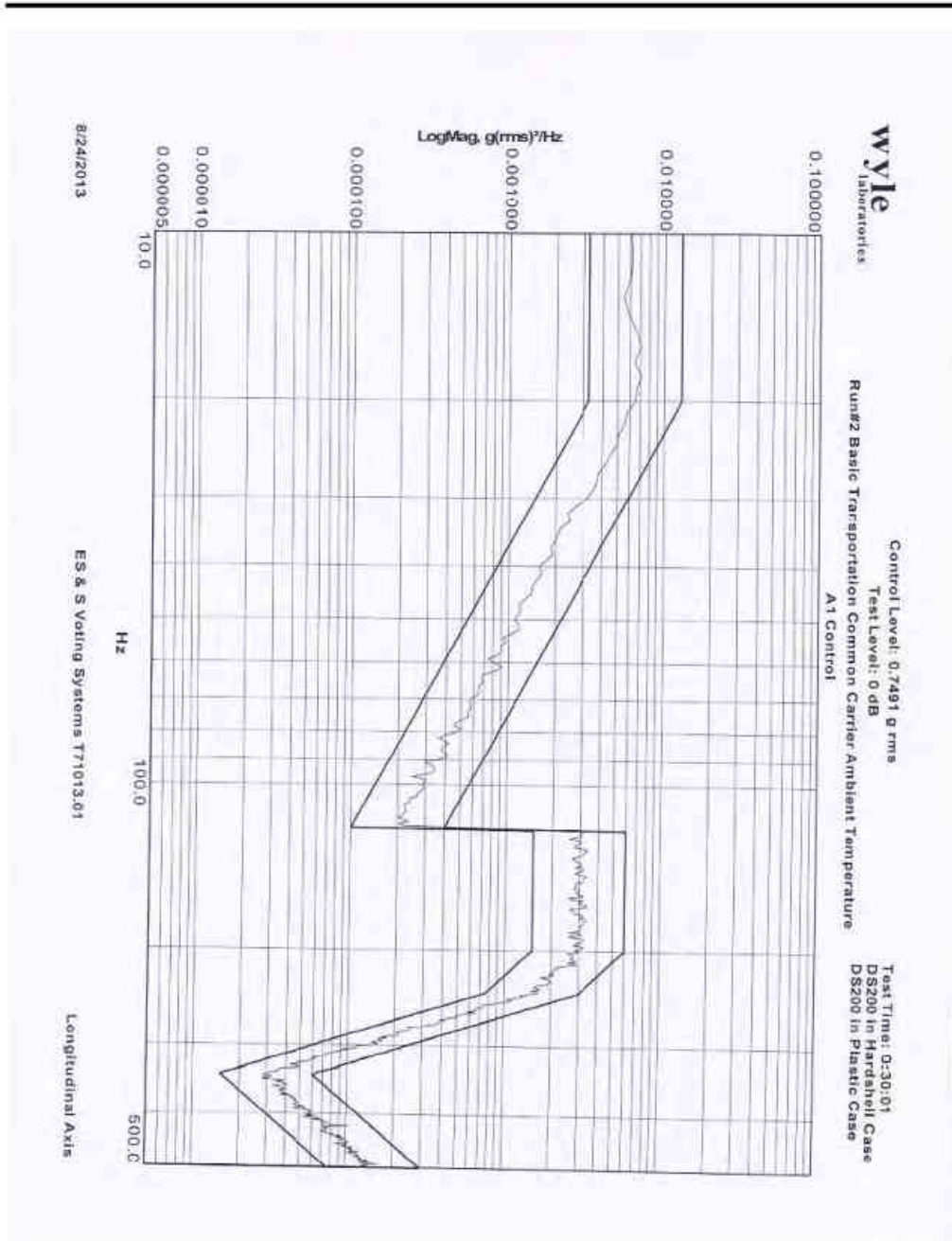
Signed *[Signature]* 9/15/13

Approved _____

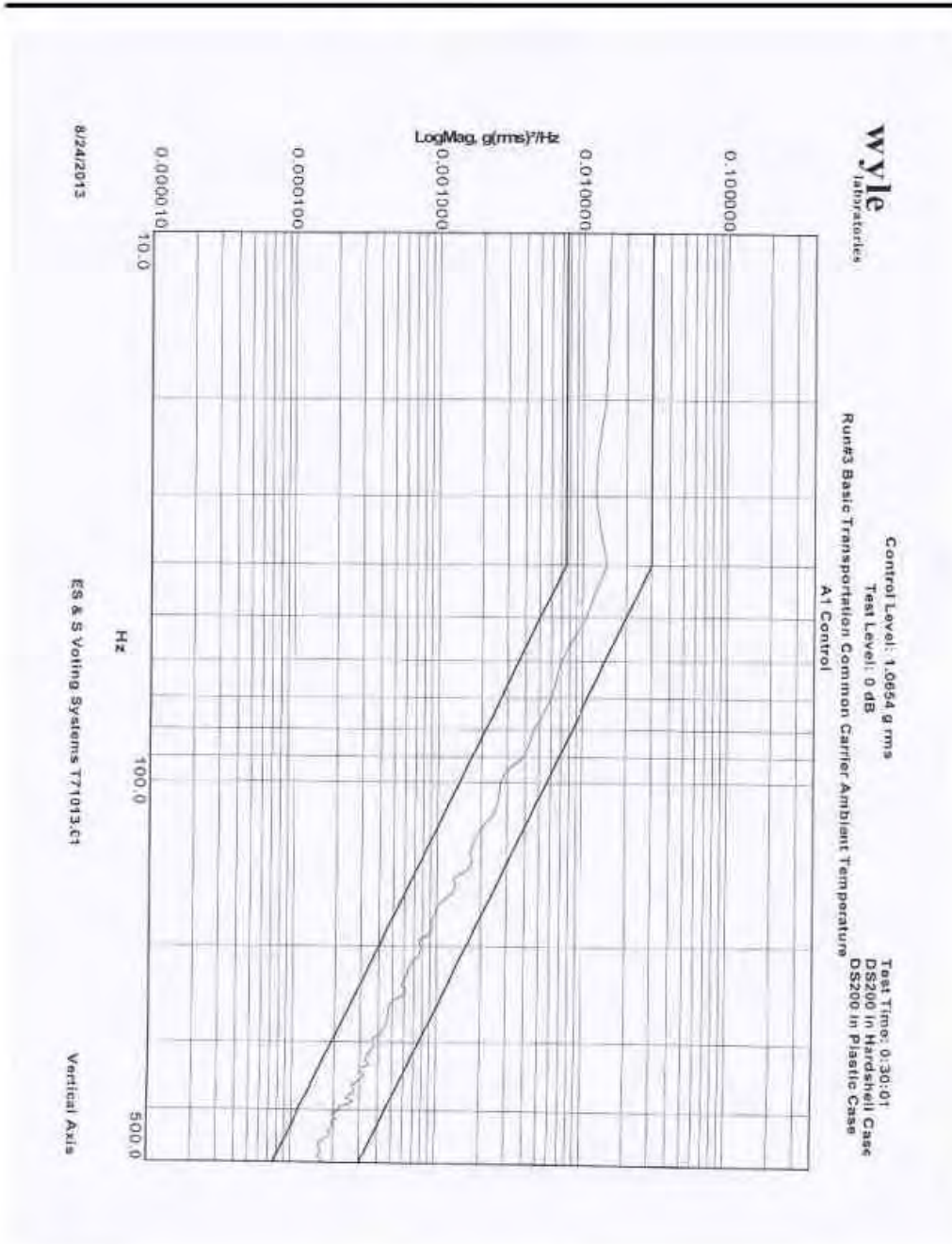
Job No. T71013.01
 Report No.
 Date: 08/24/13
 Page 2 of 2



WYLE LABORATORIES, INC.
Huntsville Facility



WYLE LABORATORIES, INC.
Huntsville Facility



WYLE LABORATORIES, INC.
Huntsville Facility

BENCH HANDLING TEST DATA

WYLE LABORATORIES, INC.
Huntsville Facility



DATA SHEET

Customer ES&S
 Specimen EVS 4500
 Part No. DS200 Amb. Temp. -75°F Job No. T71013
 Spec. EAC 2005 VVSG Photo Yes Report No. T71013-01
 Para. 4.6.2 Test Med. Air Start Date 8-26-13
 S/N DS0313350010 & DS0313350006 Specimen Temp. Ambient

Test Title Bench Handling

Drop Height: 4"		
	EUT1	EUT2
Edge 1: Drops 1-6	✓	✓
Edge 1: Drops 7-12	✓	✓
Edge 1: Drops 13-18	✓	✓
Edge 1: Drops 19-24	✓	✓
Post-Test Inspection: <u>Post-OP Status check completed on both units under test without issue</u>		
<u>Test Passed & completed 8/26/13 10:25 A.M.</u>		

Tested By [Signature] Date 8/26/13
Technician

Sheet No. 1 of 1

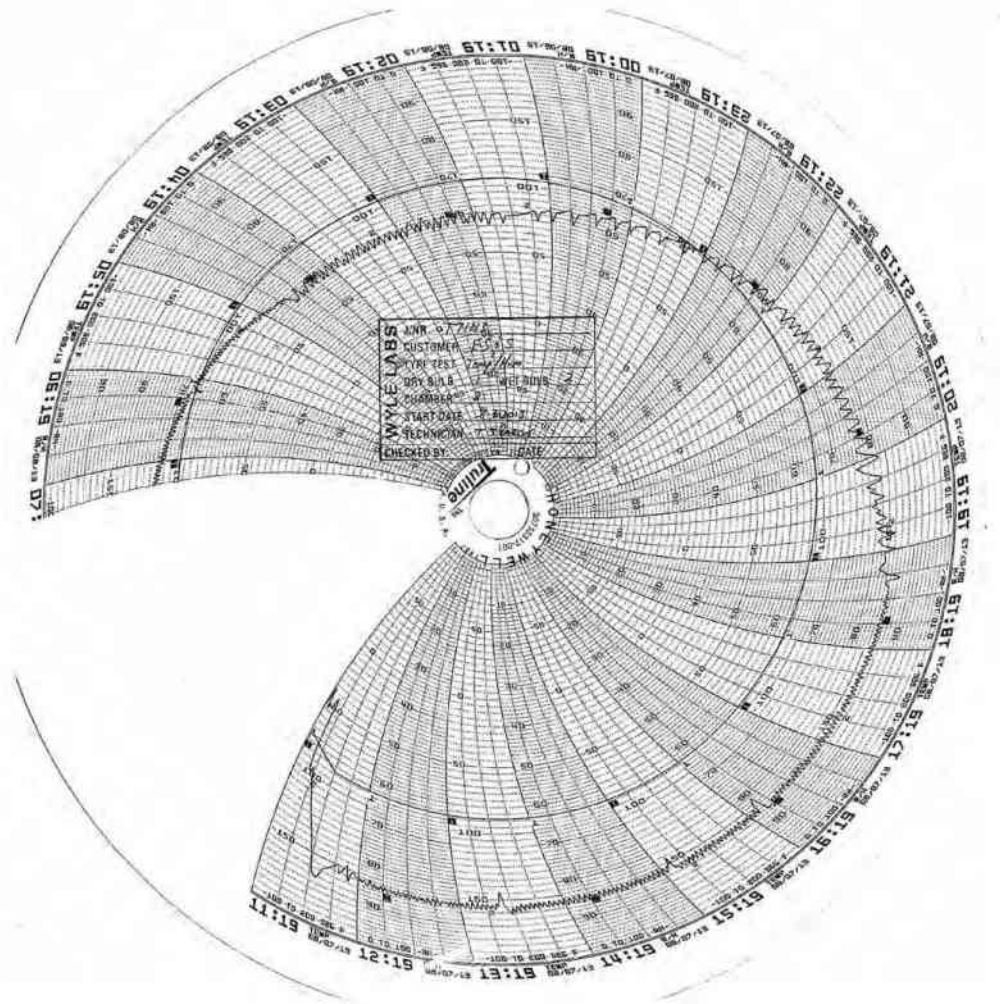
Approved [Signature]
Project Engineer

Notice of Anomaly N/A

Wyle Form WH-614A, Rev. Jun 03

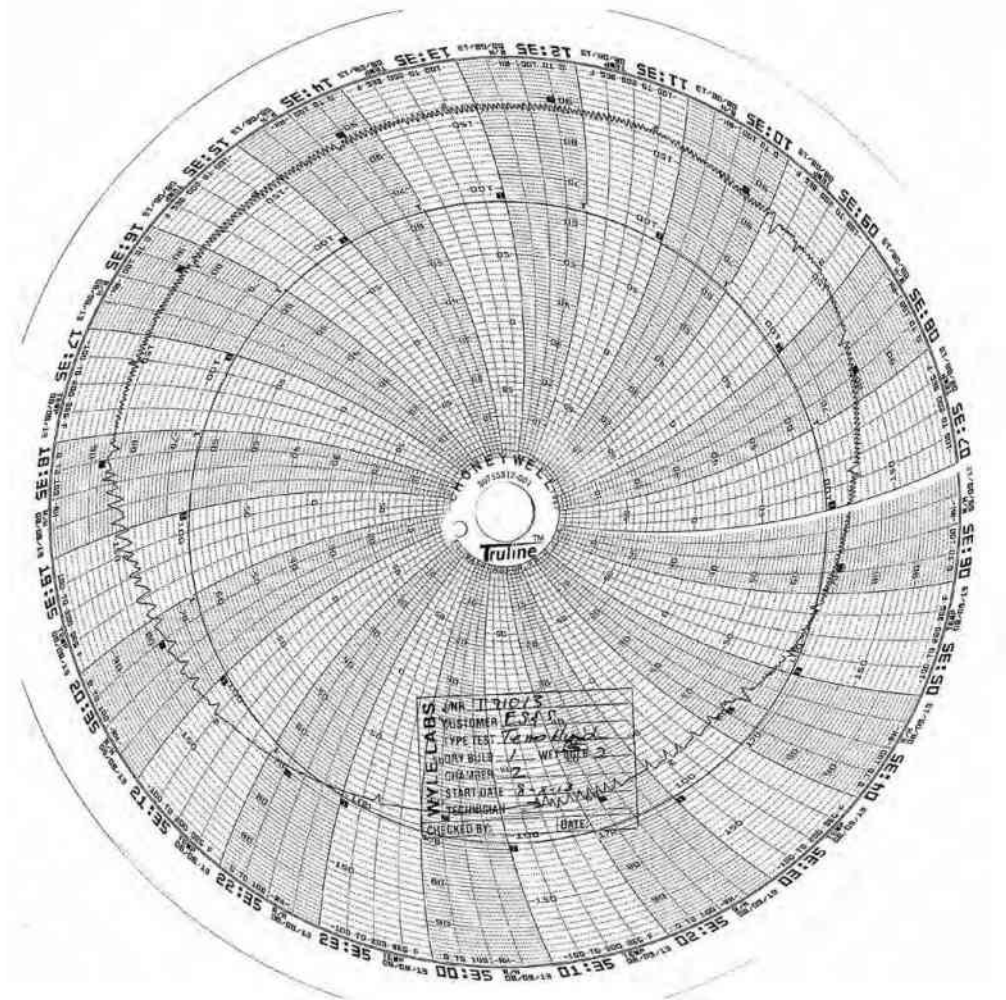
HUMIDITY TEST DATA

WYLE LABORATORIES, INC.
Huntsville Facility



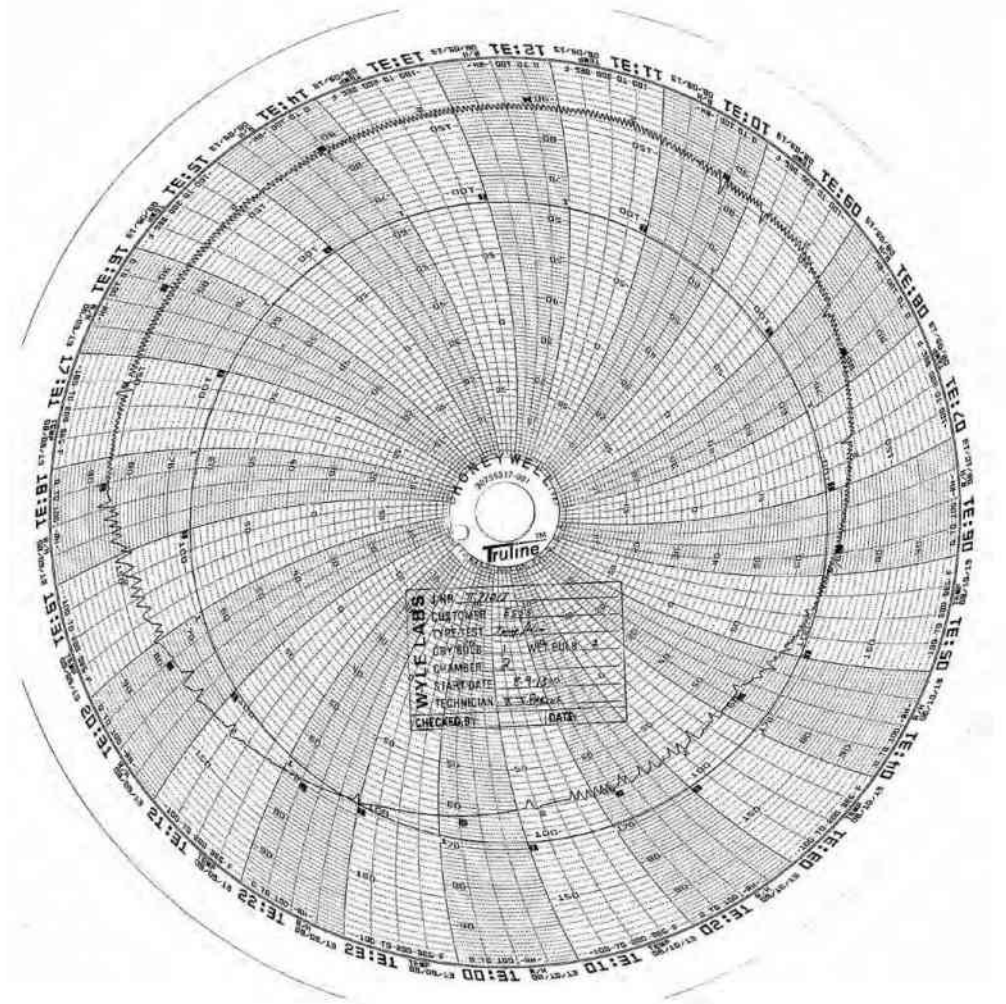
WYLE LABORATORIES, INC.
Huntsville Facility

WYLE LABORATORIES, INC.
Huntsville Facility



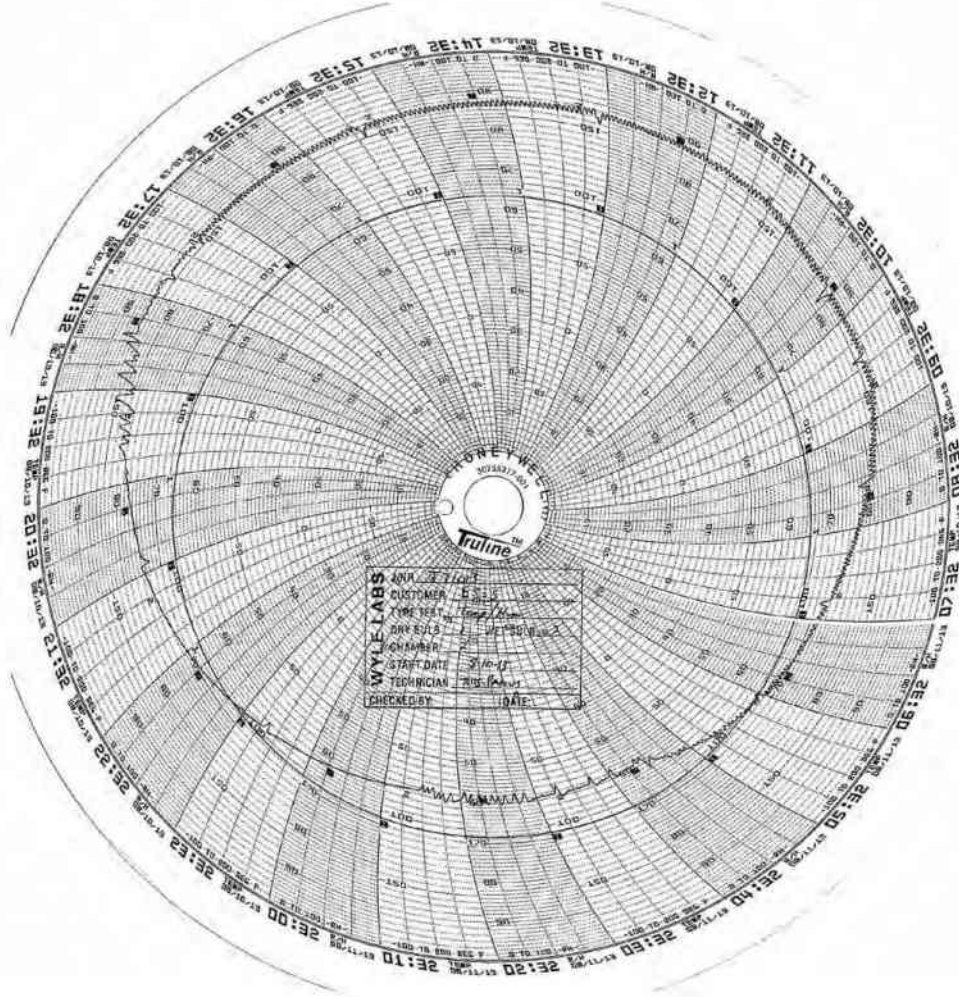
WYLE LABORATORIES, INC.
Huntsville Facility

WYLE LABORATORIES, INC.
Huntsville Facility



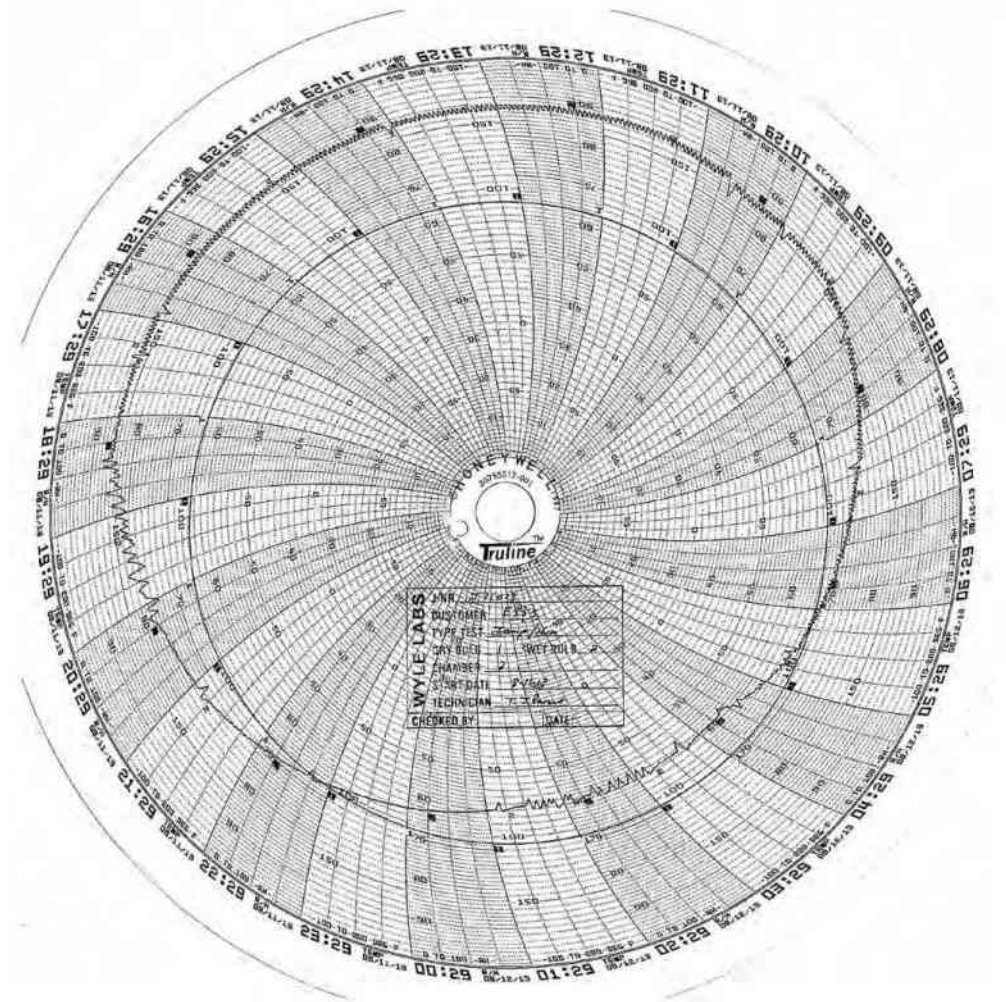
WYLE LABORATORIES, INC.
Huntsville Facility

WYLE LABORATORIES, INC.
Huntsville Facility



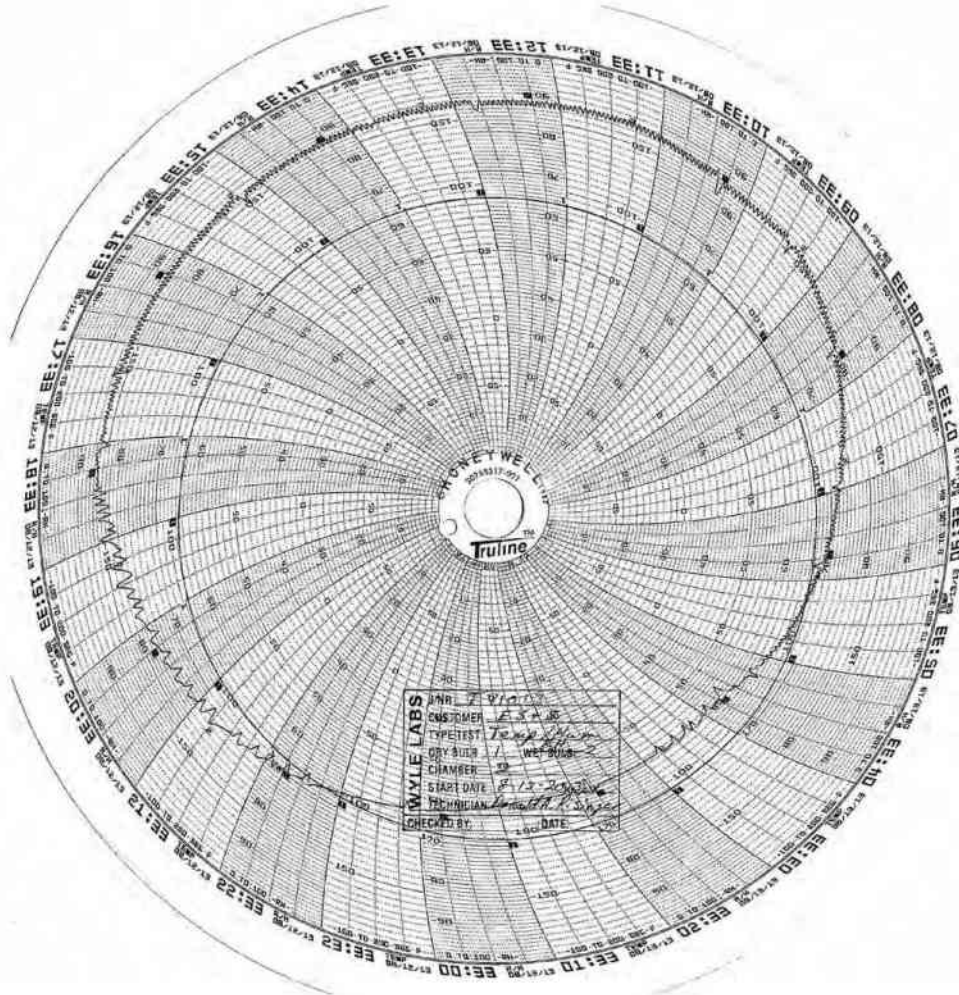
WYLE LABORATORIES, INC.
Huntsville Facility

WYLE LABORATORIES, INC.
Huntsville Facility



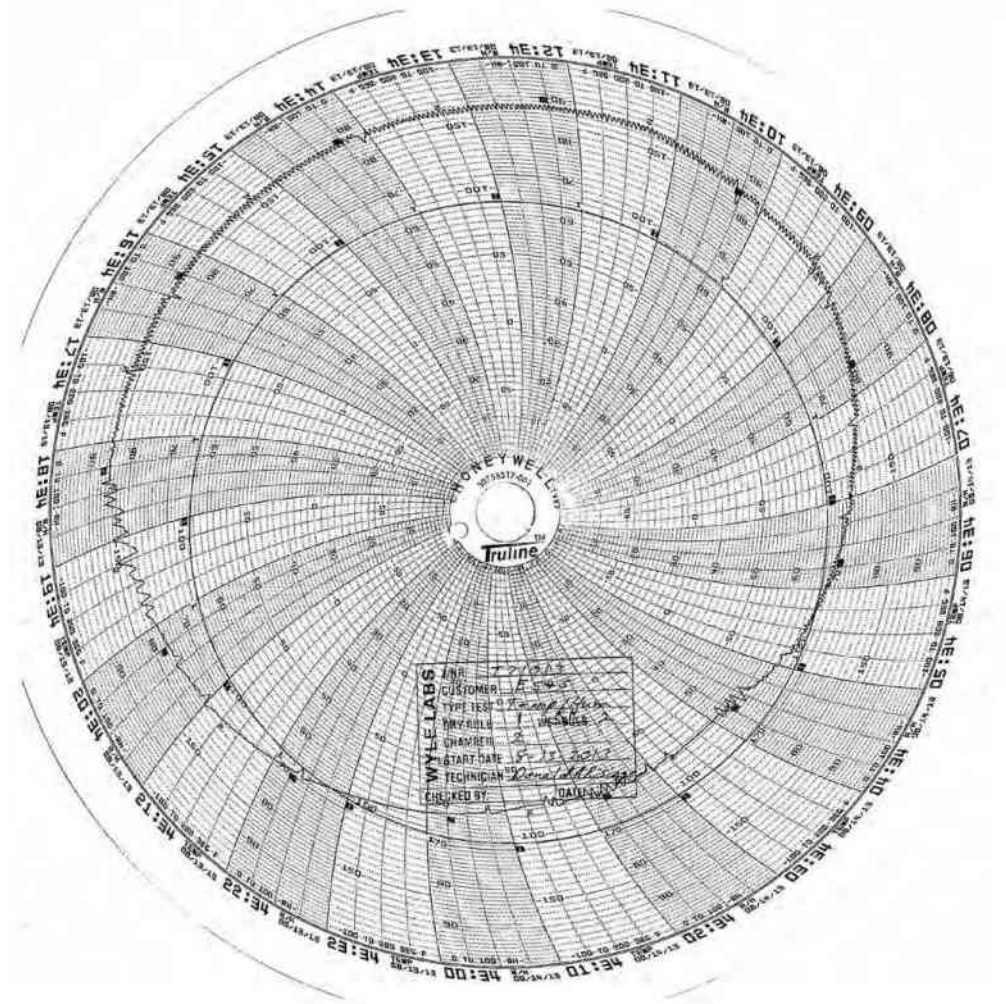
WYLE LABORATORIES, INC.
Huntsville Facility

WYLE LABORATORIES, INC.
Huntsville Facility



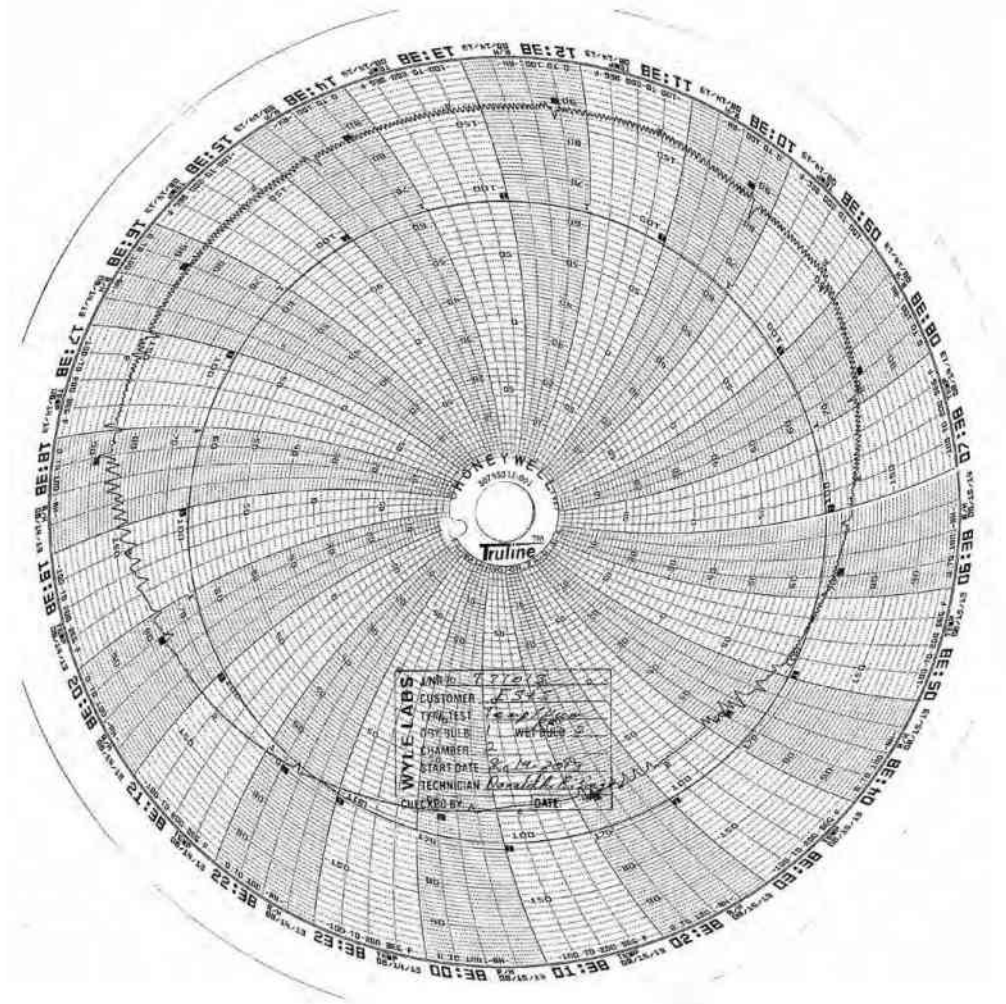
WYLE LABORATORIES, INC.
Huntsville Facility

WYLE LABORATORIES, INC.
Huntsville Facility



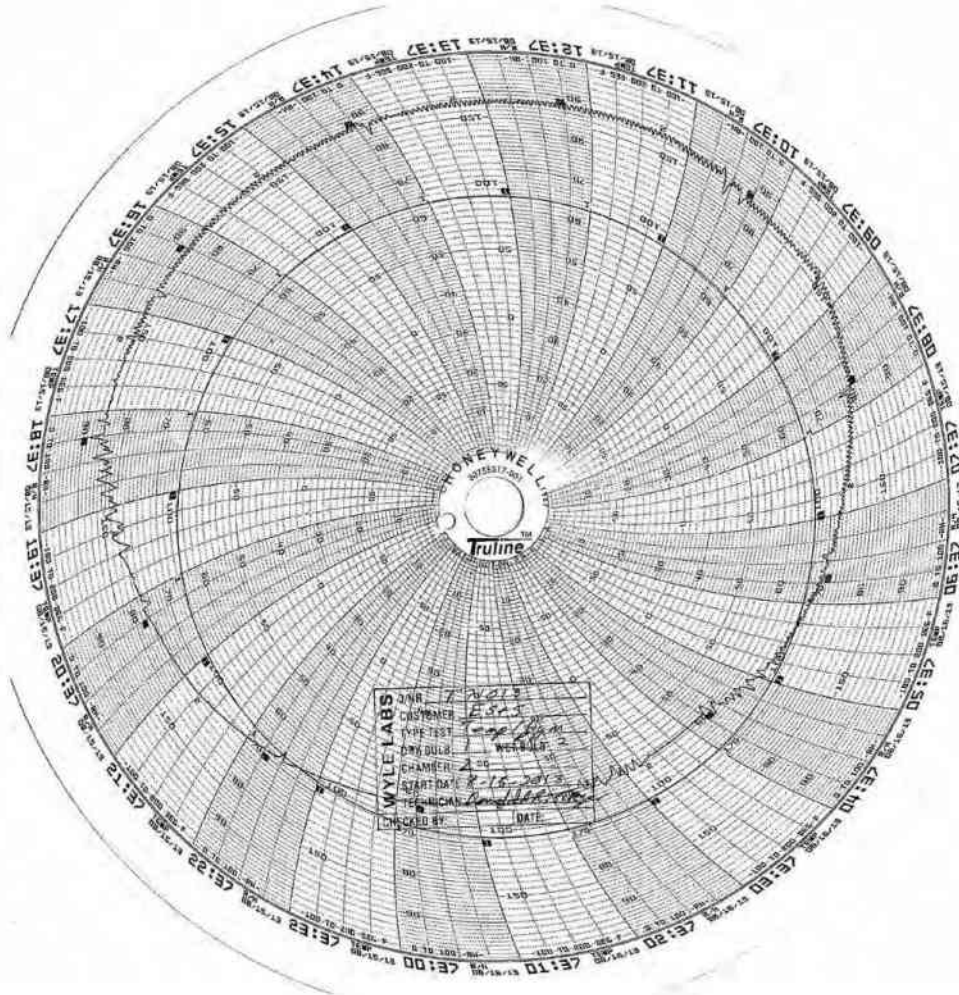
WYLE LABORATORIES, INC.
Huntsville Facility

WYLE LABORATORIES, INC.
Huntsville Facility



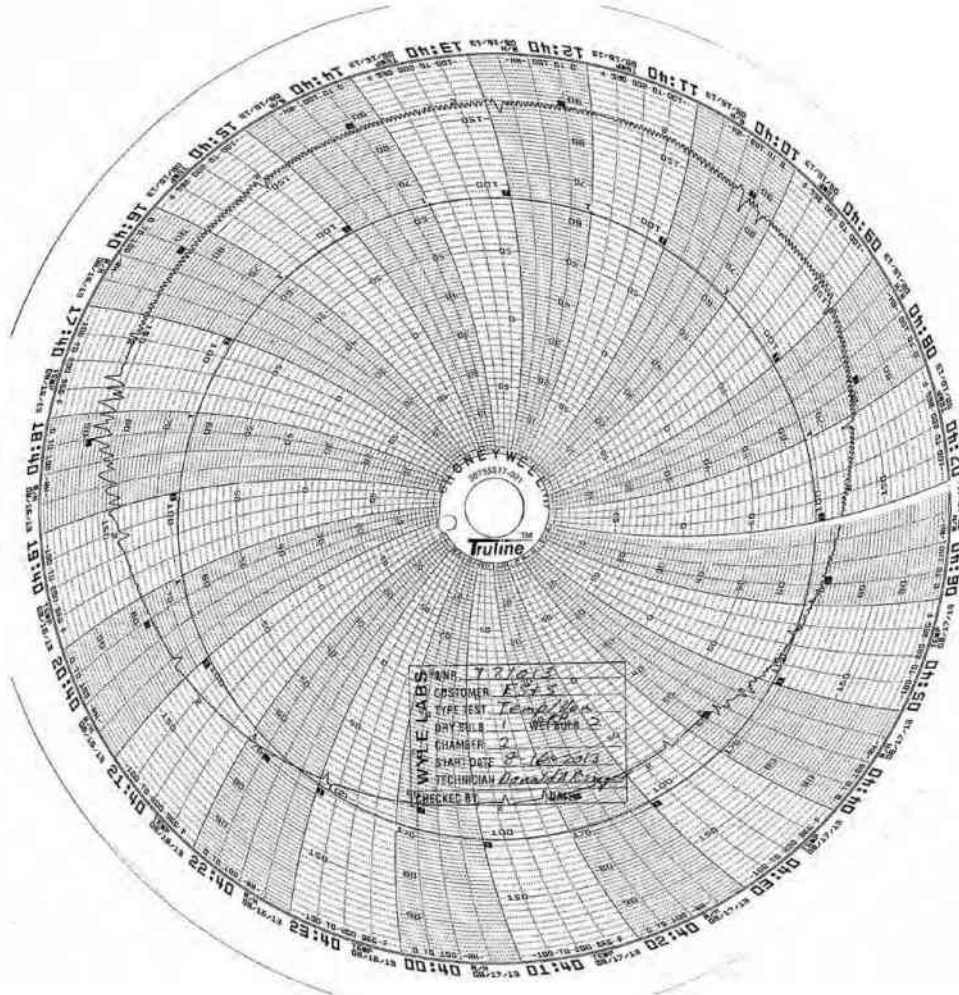
WYLE LABORATORIES, INC.
Huntsville Facility

WYLE LABORATORIES, INC.
Huntsville Facility



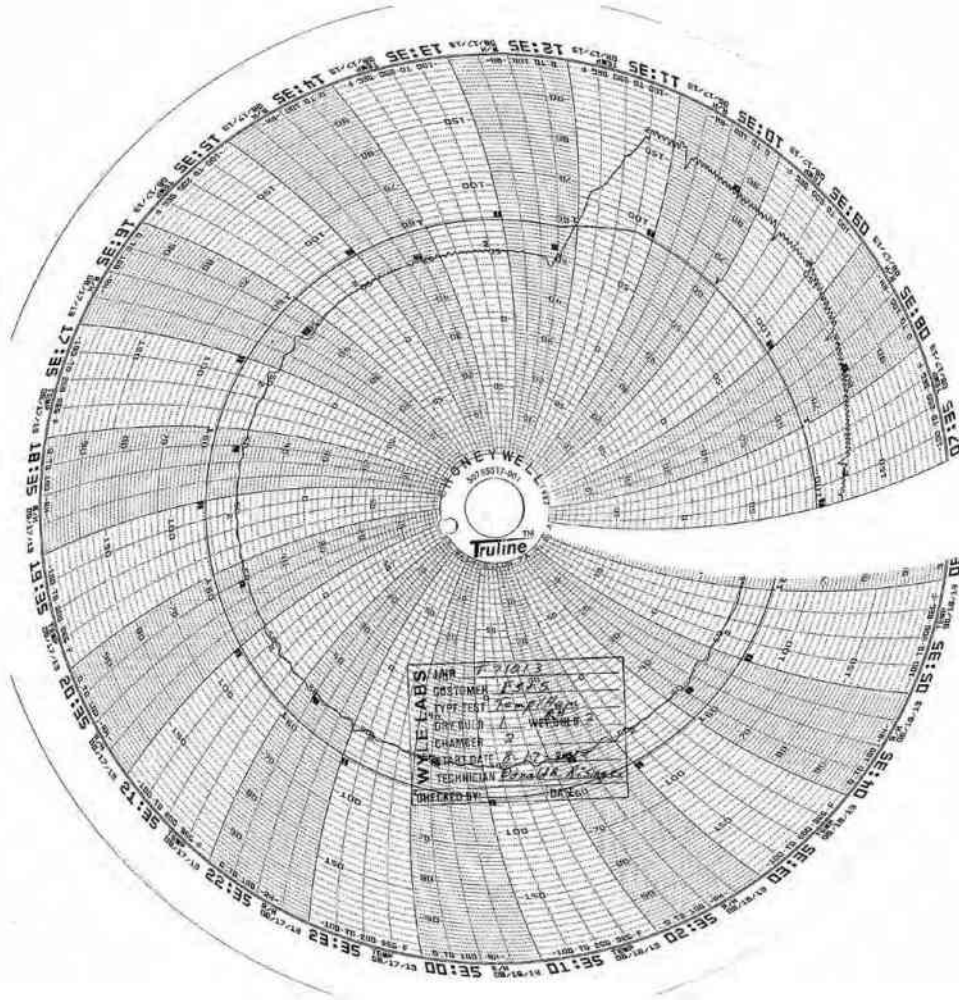
WYLE LABORATORIES, INC.
Huntsville Facility

WYLE LABORATORIES, INC.
Huntsville Facility



WYLE LABORATORIES, INC.
Huntsville Facility

WYLE LABORATORIES, INC.
Huntsville Facility



WYLE LABORATORIES, INC.
Huntsville Facility

WYLE LABORATORIES, INC.
Huntsville Facility