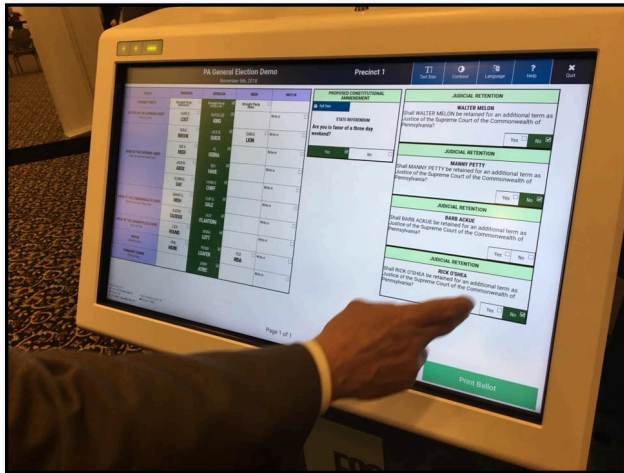




# Emergency Preparedness and Elections



# 05

## Phases of Emergency Management

Prevent



Prepare



Respond



Recover



Mitigate



# Primary Threats

1. Flash Flooding
2. Extended Closure of Limited Access/Core Routes
3. Hazmat and Human Caused Events
4. Power Outages
5. Phone Outages

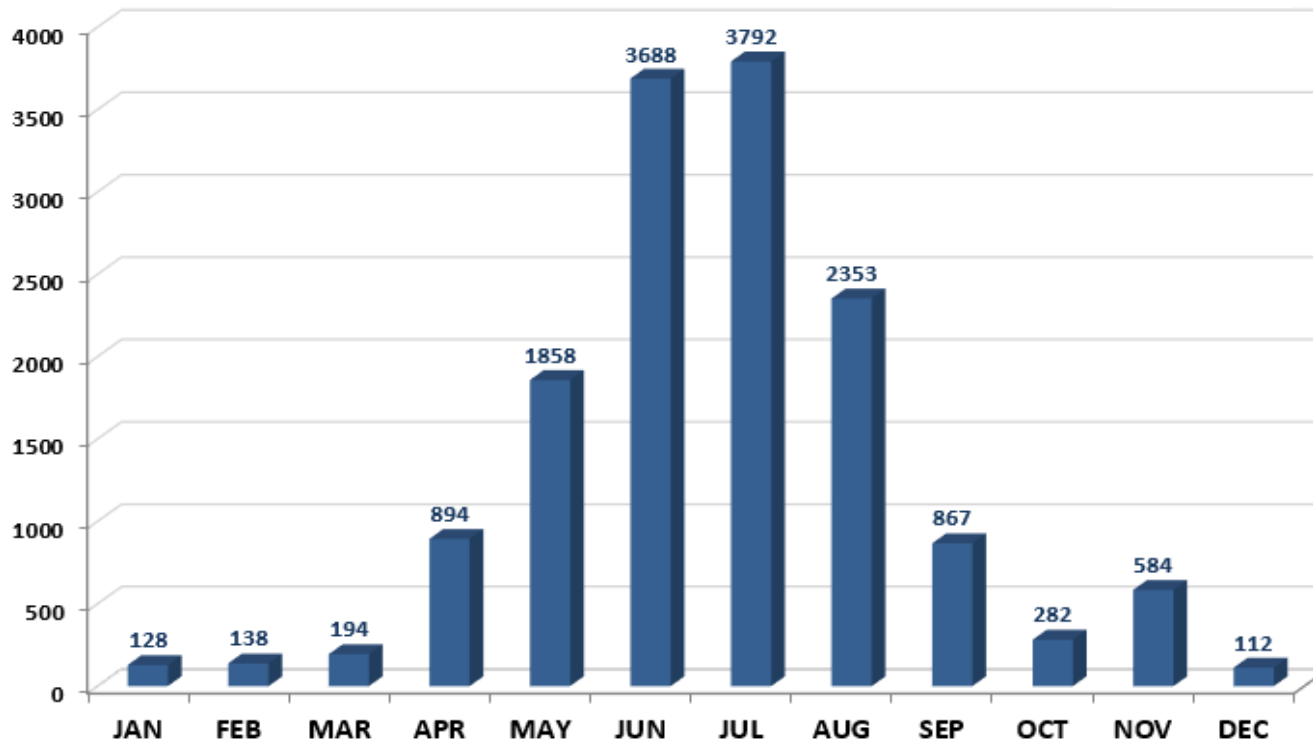




# Severe Weather Climatology



## PENNSYLVANIA SEVERE WIND REPORTS BY MONTH (1955-2017)



Data Source: NWS Storm Prediction Center



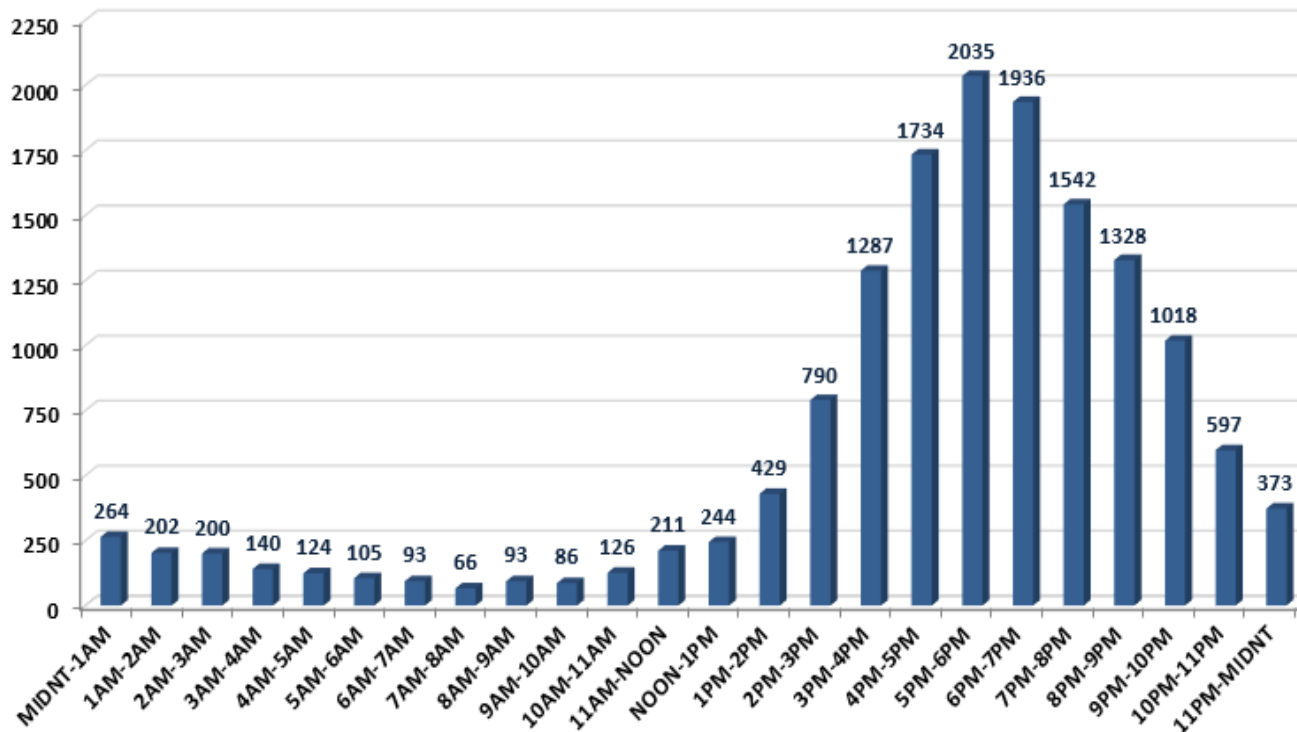
Updated: 7/2018

# Severe Weather Climatology



## PENNSYLVANIA SEVERE WIND REPORTS

BY HOUR (1955-2017)



Data Source: NWS Storm Prediction Center  
All times are Eastern Daylight Time (EDT)



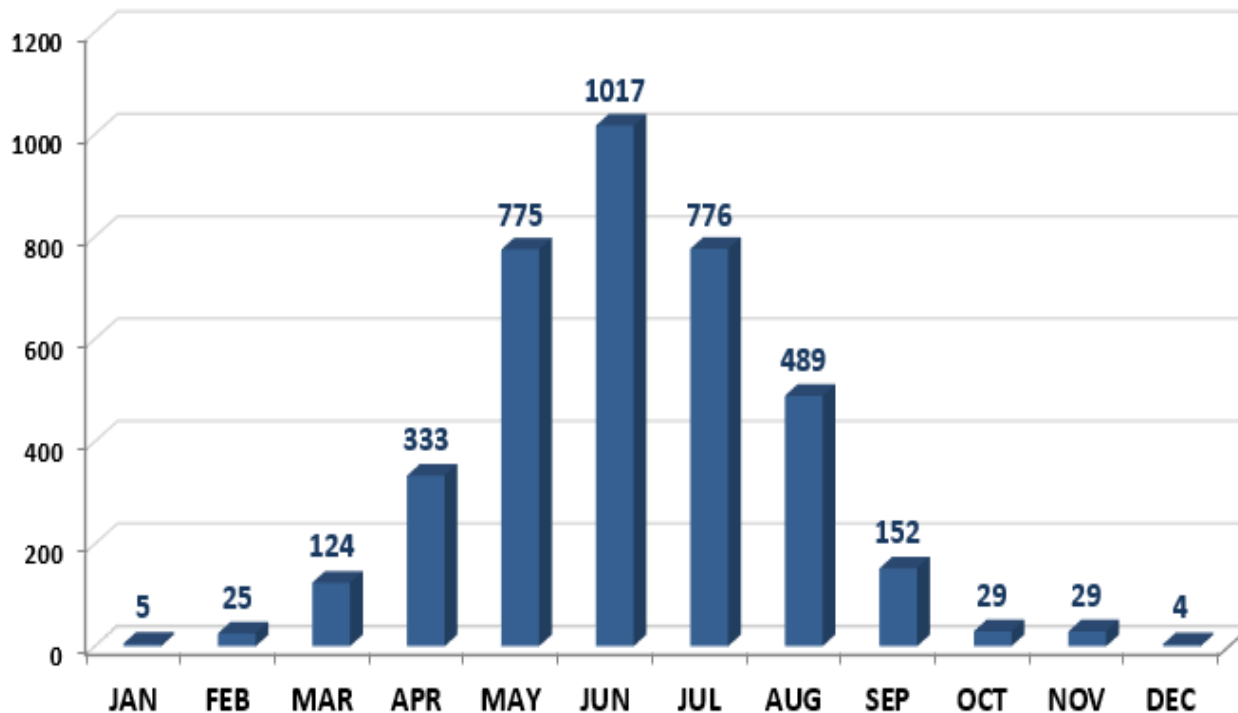
Updated: 7/2018

# Severe Weather Climatology



## PENNSYLVANIA SEVERE HAIL REPORTS

BY MONTH (1955-2017)



Data Source: NWS Storm Prediction Center  
Severe Hail: 1955-2009 >0.75" | 2010-Present >1.00"



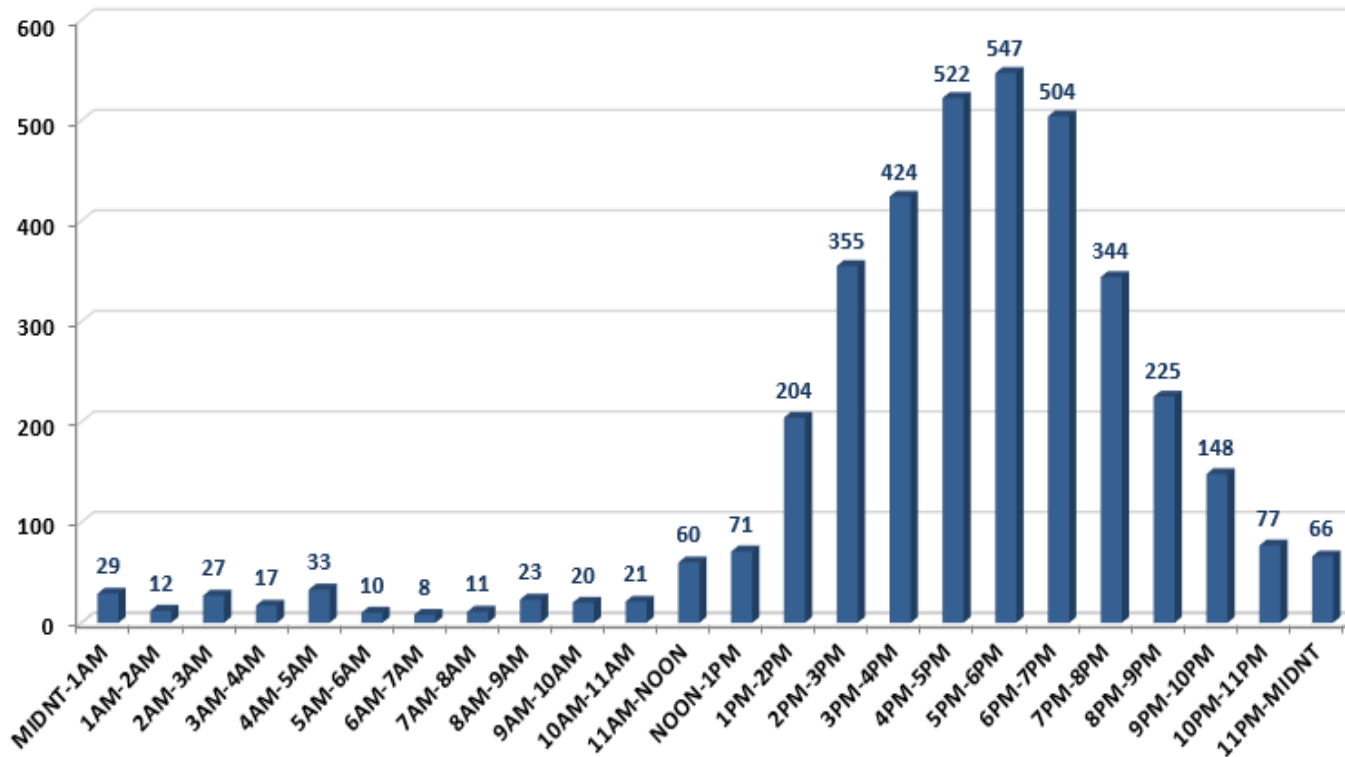
Updated: 7/2018

# Severe Weather Climatology



## PENNSYLVANIA SEVERE HAIL REPORTS

BY HOUR (1955-2017)



Data Source: NWS Storm Prediction Center  
Severe Hail: 1955-2009 >0.75" | 2010-Present >1.00"

All times are Eastern Daylight Time (EDT)

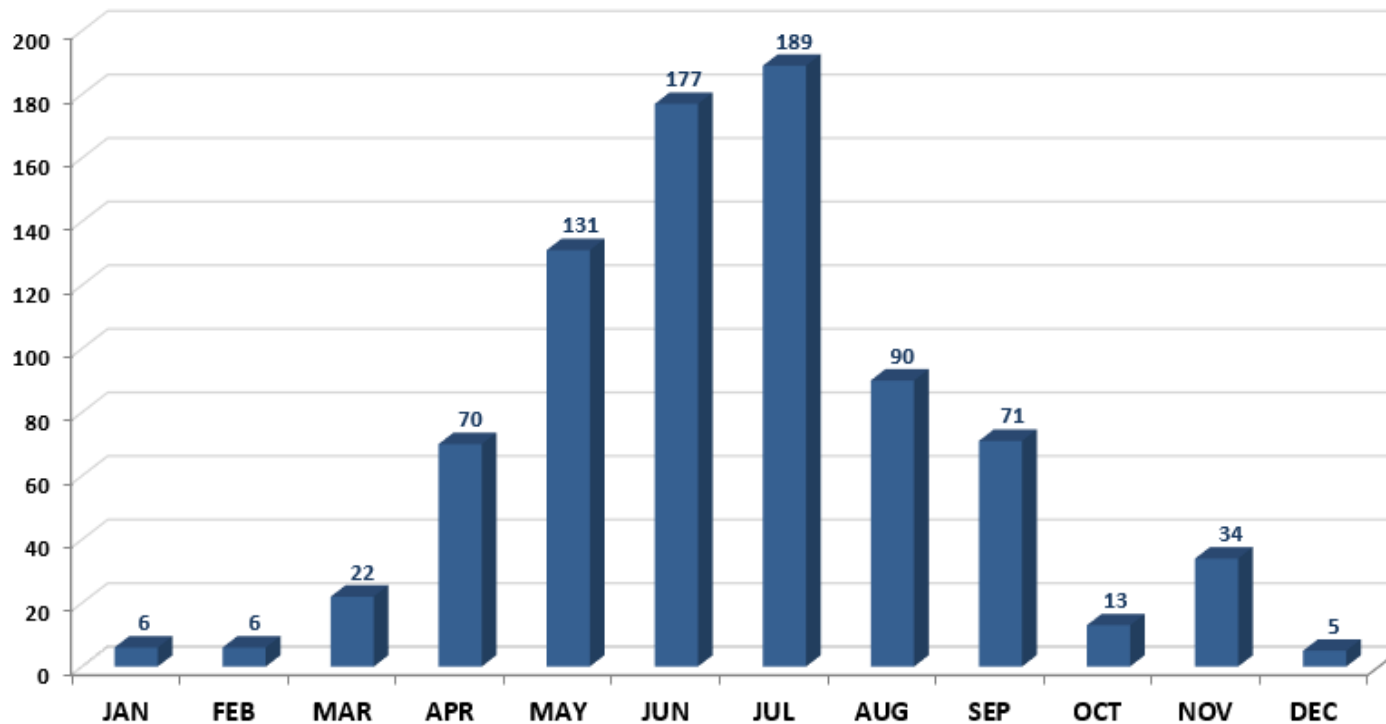


Updated: 7/2018

# Severe Weather Climatology



## PENNSYLVANIA TORNADOES BY MONTH (1950-2018\*)



Data Source: NWS Storm Prediction Center, NWS Public Information Statements  
\*2015-2018 Data are Preliminary



Updated: 7/2018

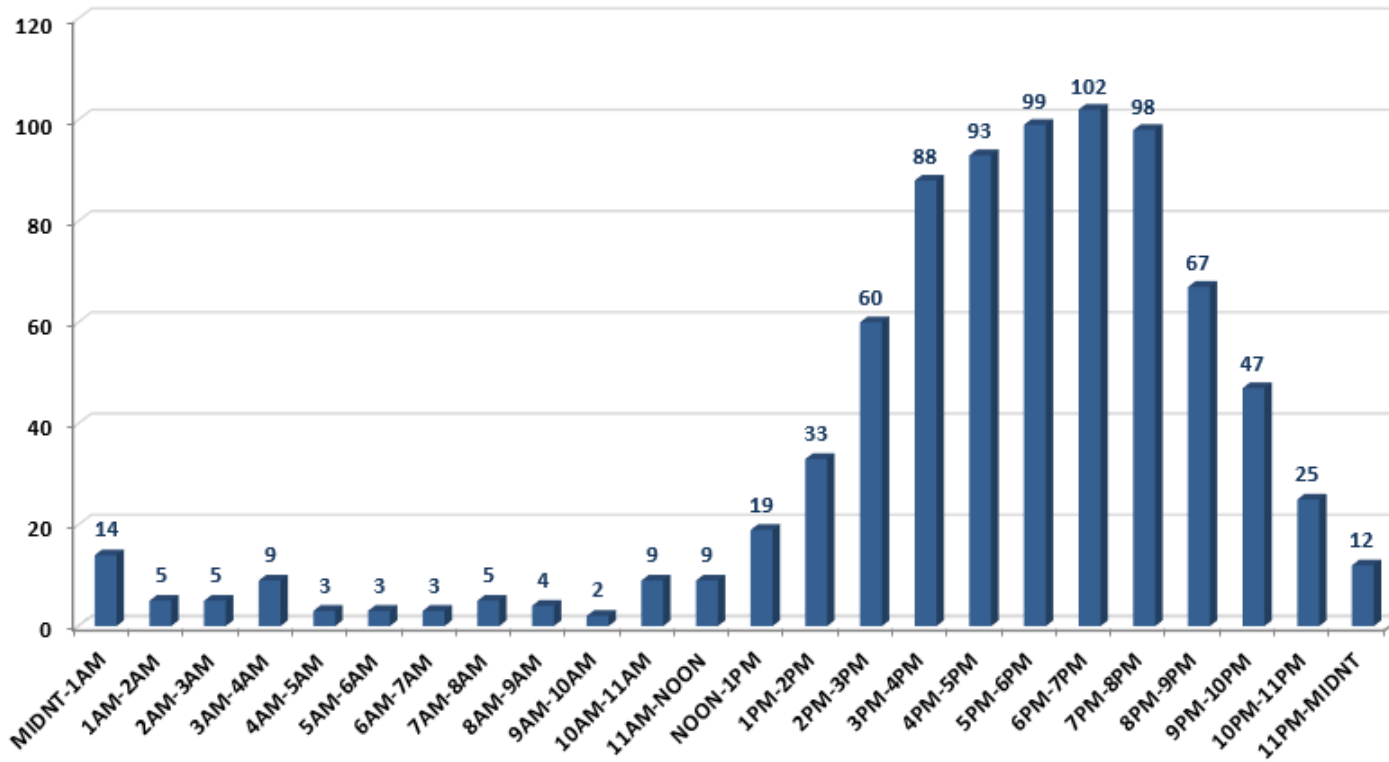


# Severe Weather Climatology



## PENNSYLVANIA TORNADOES

BY HOUR (1950-2018\*)



Data Source: NWS Storm Prediction Center, NWS Public Information Statements

All times are Eastern Daylight Time (EDT)

\*2015-2018 Data are Preliminary

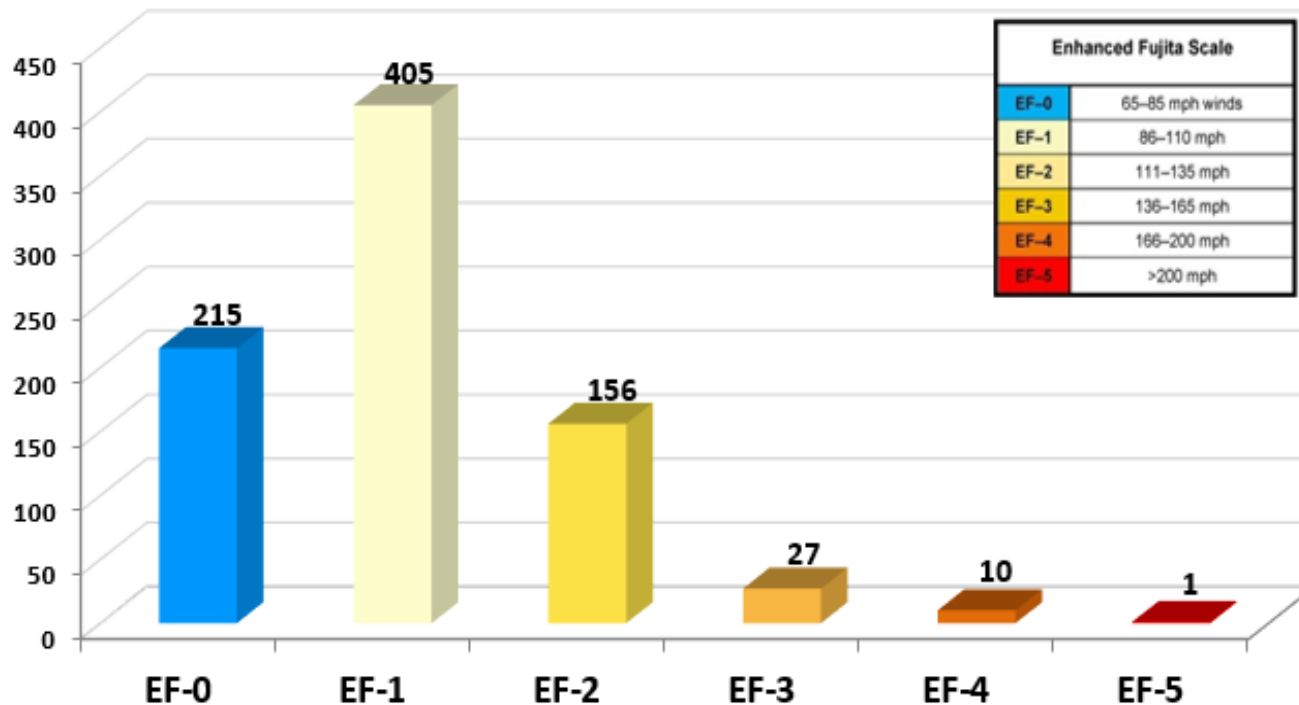


Updated: 7/2018

# Severe Weather Climatology

## PENNSYLVANIA TORNADOES

BY INTENSITY (1950-2018\*)



Data Source: NWS Storm Prediction Center, NWS Public Information Statements

Note: Note Fujita (F) Scale upgraded to Enhanced Fujita (EF) Scale in 2007

\*2015-2018 Data are Preliminary



# Forecast: Mon. May 14, 2018

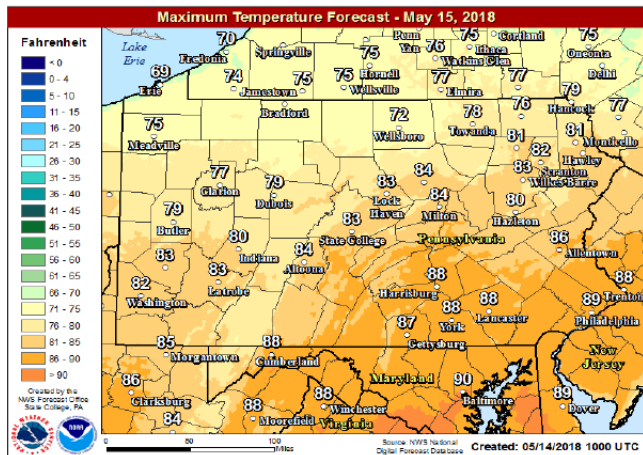
## Election Day Forecast

Tuesday, May 15, 2018

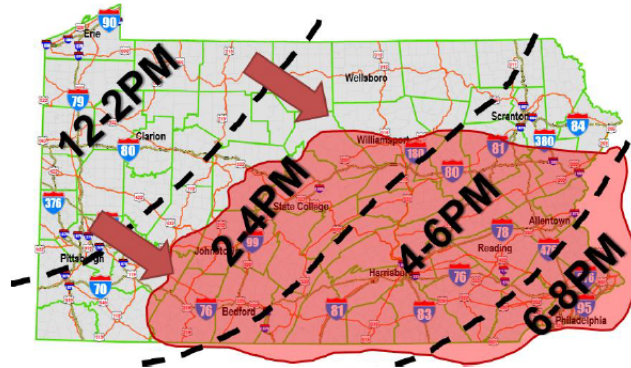
Polls Open: 7AM-8PM

**Forecast:** Very warm and humid day. Severe t'storms possible during the afternoon & evening. Vote early if possible and monitor forecast for alerts.

**Highs:** Lower 70s to Upper 80s



High Temperatures



Estimated Storm Timing (Black)  
Greatest Severe Threat (Red)



# Forecast: Election Day May 15, 2018

## Election Day Forecast

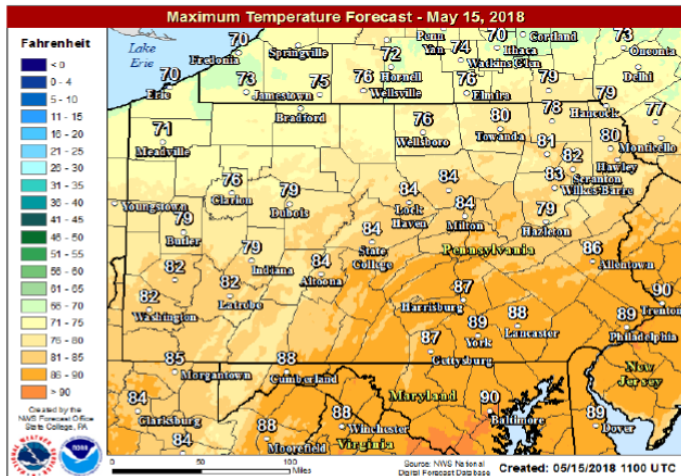
Tuesday, May 15, 2018

Polls Open: 7AM-8PM

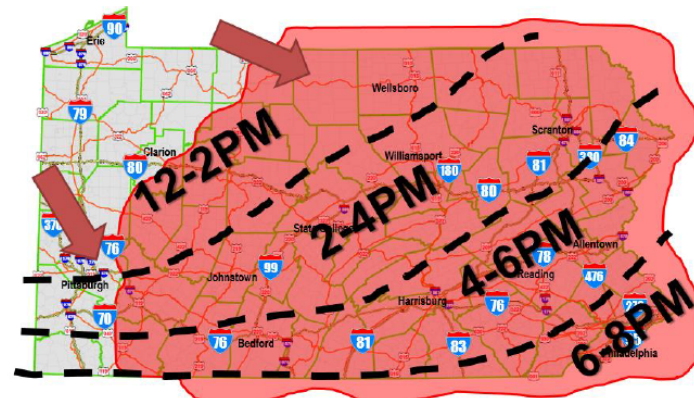
**Forecast:** Very warm and humid day. Severe t'storms likely during the afternoon & evening with potential for damaging wind, hail, flash flooding and an isolated tornado.

**Vote early if possible and have ways to receive severe weather alerts.**

**Highs: Near 70° to Near 90°**



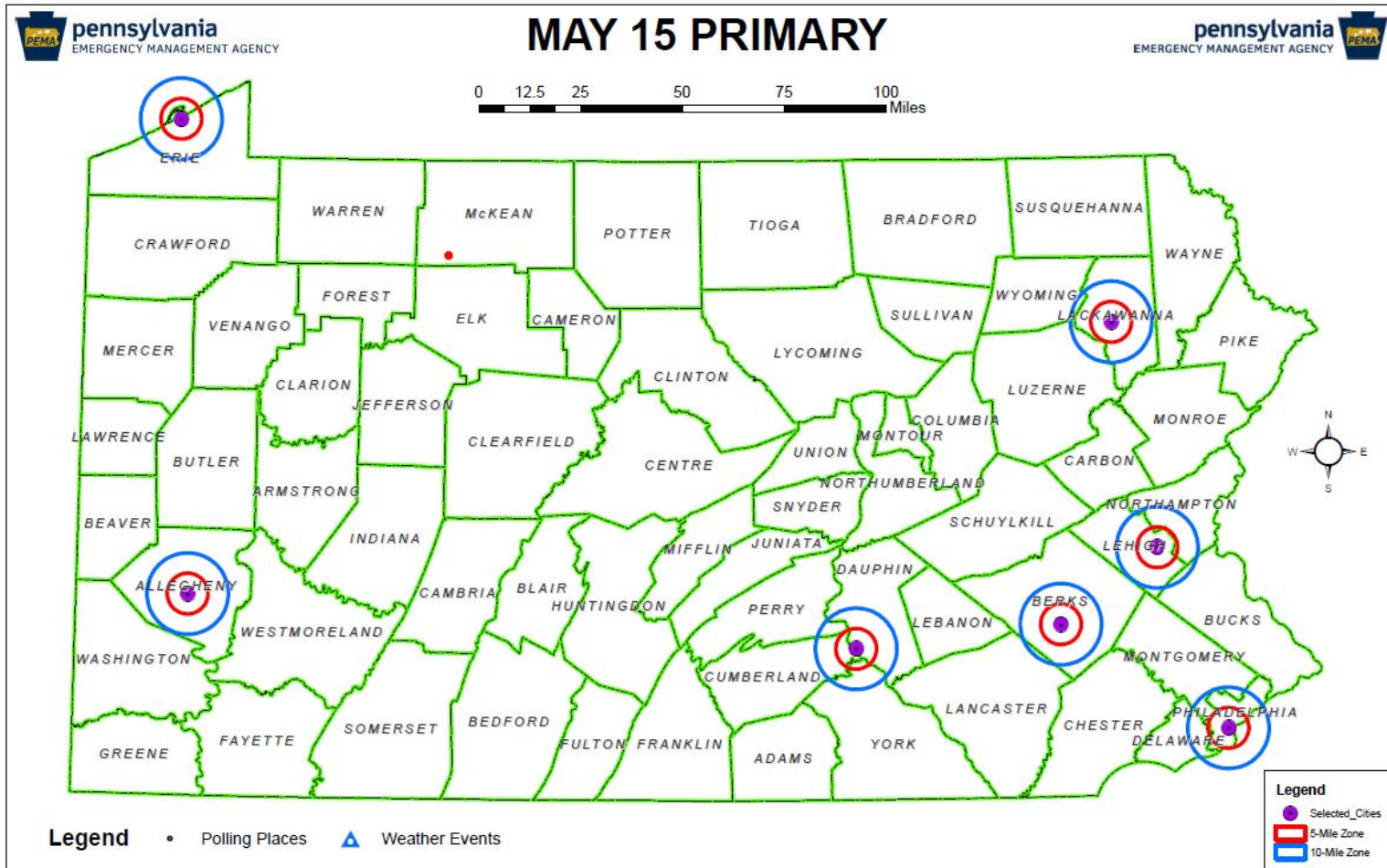
**High Temperatures**



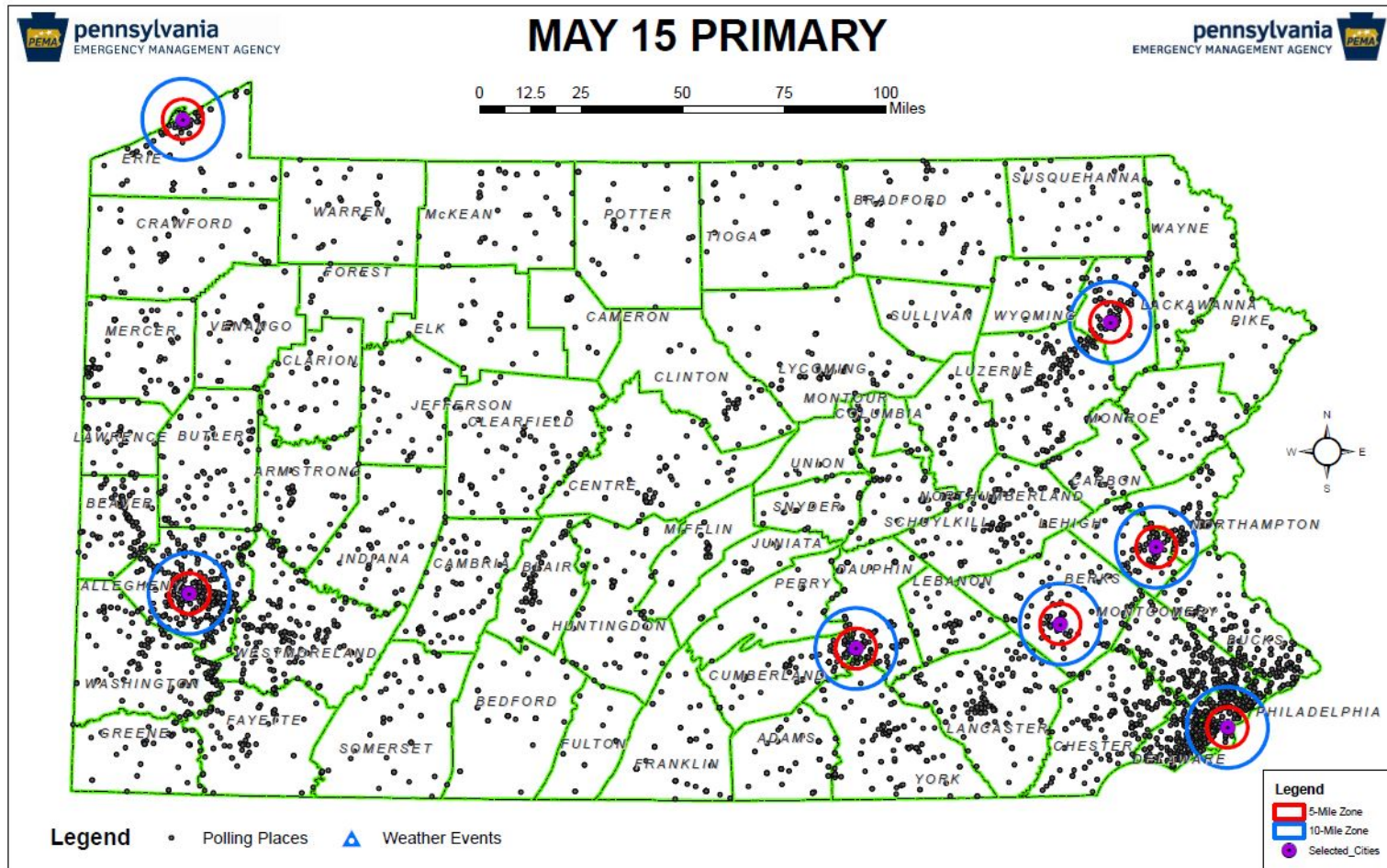
pennsylvania  
EMERGENCY MANAGEMENT AGENCY



# 2018 Primary Election: May 15, 2018



# Pennsylvania Polling Locations









# Next Steps

- **PEMA, PA Dept. of State and other state agencies are working together to prepare for the 2018 November General Election.**
- **PEMA and the PA Dept. of State are in the process of better connecting our 67 county Emergency Management Coordinators and Elections Directors.**
- **Ongoing discussion for improved real-world and data sharing through face-to-face exchanges and technology before, during and after elections.**
- **What are you doing to be prepared?**

# Find Us, Follow Us and Be Prepared.



**pennsylvania**  
EMERGENCY MANAGEMENT AGENCY



[www.pema.pa.gov](http://www.pema.pa.gov)  
[www.Ready.PA.gov](http://www.Ready.PA.gov)

<https://www.facebook.com/BeReadyPA>

@PEMADirector  
@ReadyPA  
@JeffJumperWX



# Melissa A. Frey

Special Assistant to Director Flinn  
Accredited EMAP Program Manager & Assessor

PA Emergency Management Agency  
1310 Elmerton Avenue  
Harrisburg, PA 17110  
717.346.3147

Email: [mpeiffer@pa.gov](mailto:mpeiffer@pa.gov)  
[www.Ready.PA.gov](http://www.Ready.PA.gov)