

# Election Infrastructure Subsector

EI Subsector Updates and NIPP Partnership Model Overview

12 September, 2017



Homeland  
Security

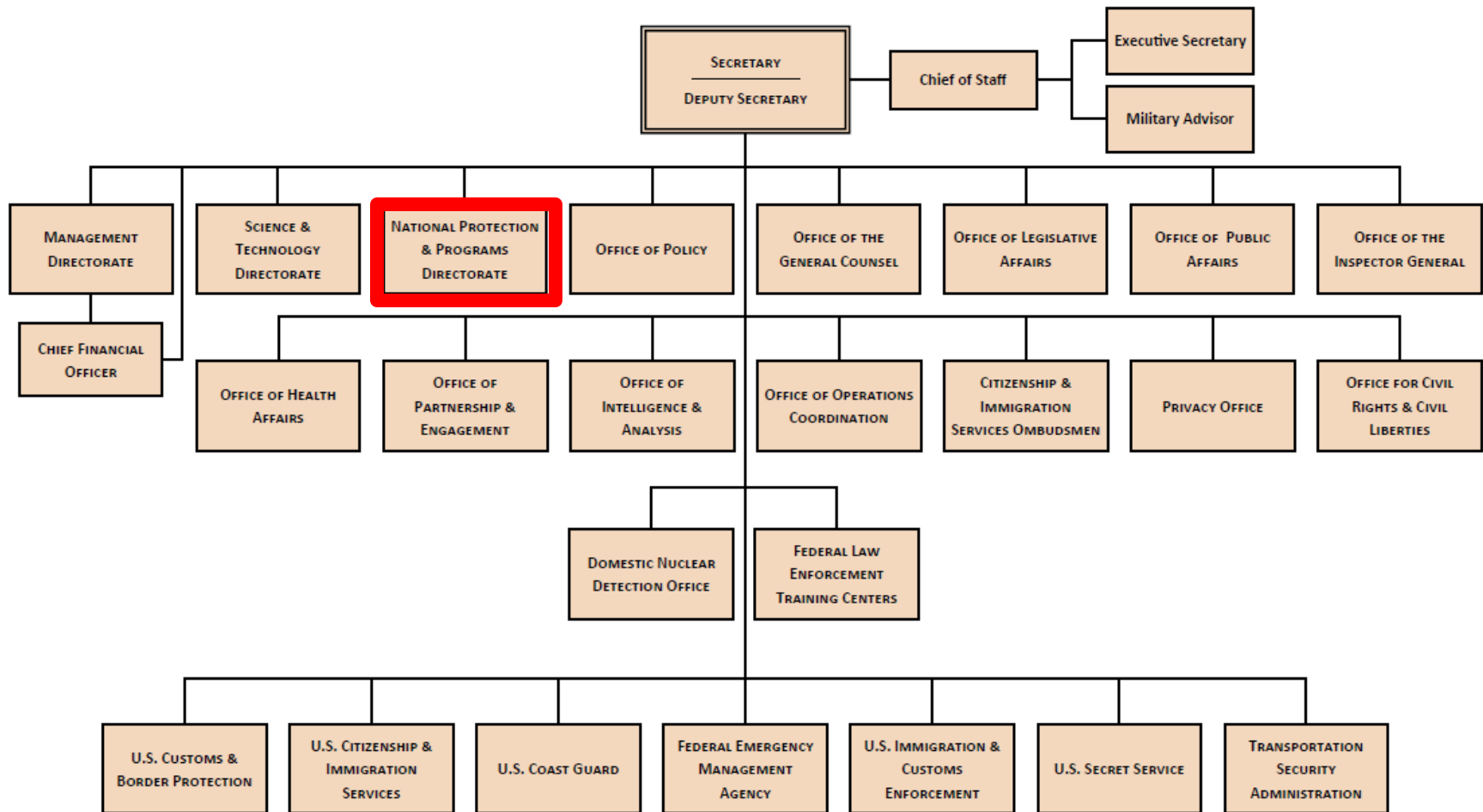
# Election Infrastructure Subsector Designation

- Designated as a Critical Infrastructure Subsector 6 January, 2017 by former Secretary Jeh Johnson
  - Election Infrastructure (EI) = storage facilities; polling places; centralized vote tabulation stations; voting machines; and other associated systems
  - Designation affirmed by current administration in June 2017
- Designation enables DHS to prioritize assistance to state and local election officials who request it
- Subsector of Government Facilities Sector
  - National Protection and Programs Directorate (NPPD) serves as the Sector-Specific Agency (SSA)



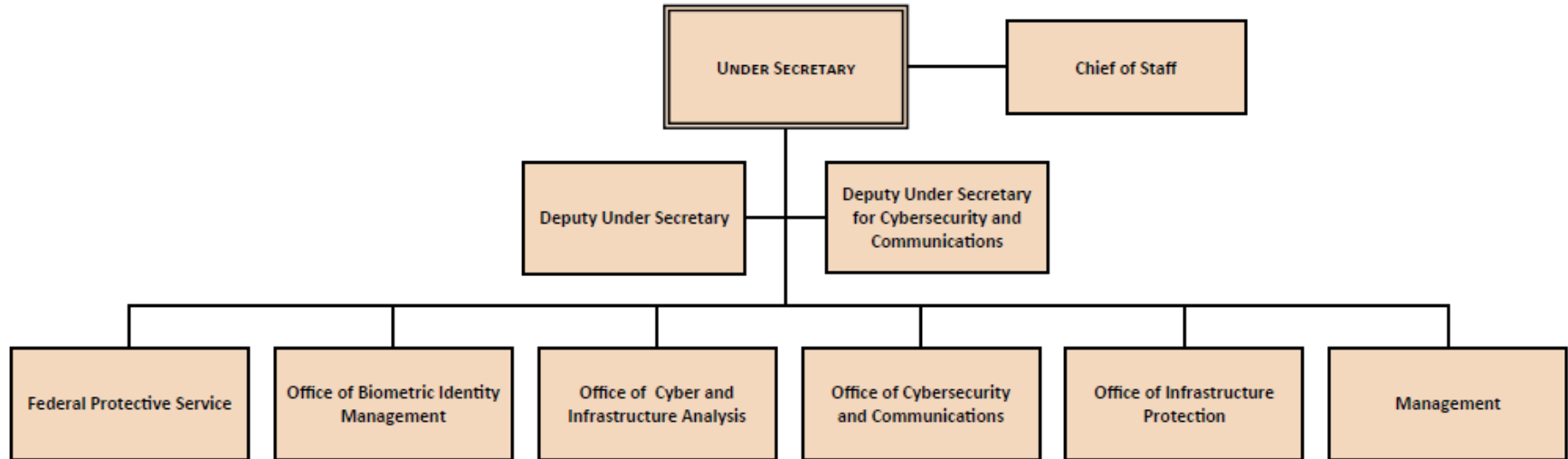
**Homeland  
Security**

# DHS Organization Chart



Homeland  
Security

# NPPD Organization Chart



**Homeland  
Security**

# Critical Infrastructure Overview

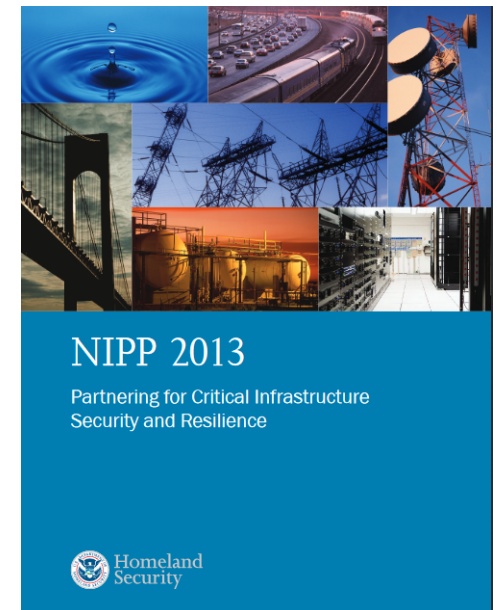
- Defined in the National Infrastructure Protection Plan (NIPP):
  - “Systems and assets, whether physical or virtual, so vital to the United States that the incapacity or destruction of such systems and assets would have a debilitating impact on security, national economic security, national public health or safety, or any combination of those matters.”
- 16 Sectors defined in NIPP
  - Election Infrastructure is a Subsector of Government Facilities Sector



**Homeland  
Security**

# National Infrastructure Protection Plan

- Issued in response to Presidential Policy Directive 21 (PPD-21) on Critical Infrastructure Security and Resilience
- Developed in collaborative process involving stakeholders from all 16 CI sectors, SLTT governments, and industry partners
- Provides an updated approach to critical infrastructure security and resilience
- Recognizes key roles and knowledge of CI owners and operators
- Integrates efforts by all levels of government, private, and nonprofit sectors



**Homeland  
Security**

# Sector Partnership Model

- Each Sector has a GCC and SCC
- Sector-Specific Agency (SSA) leads Federal involvement in security and resilience programs and associated activities
  - DHS/NPPD is the EI SSA

		Critical Infrastructure Partnership Advisory Council			
Critical Infrastructure Sector	Sector-Specific Agency	Sector Coordinating Councils (SCCs)	Government Coordinating Councils (GCCs)	Regional Consortia	
Chemical	Department of Homeland Security	✓	✓	Regional Consortium Coordinating Council	
Commercial Facilities <sup>i</sup>		✓	✓		
Communications <sup>i</sup>		✓	✓		
Critical Manufacturing		✓	✓		
Dams		✓	✓		
Emergency Services <sup>i</sup>		✓	✓		
Information Technology <sup>i</sup>		✓	✓		
Nuclear Reactors, Materials & Waste		✓	✓		
Food & Agriculture	Department of Agriculture, Department of Health and Human Services	✓	✓	State, Local, Tribal, and Territorial Government Coordinating Council	
Defense Industrial Base <sup>i</sup>	Department of Defense	✓	✓		
Energy <sup>i</sup>	Department of Energy	✓	✓		
Healthcare & Public Health <sup>i</sup>	Department of Health and Human Services	✓	✓		
Financial Services <sup>i</sup>	Department of the Treasury	Uses separate coordinating entity	✓		
Water & Wastewater Systems <sup>i</sup>	Environmental Protection Agency	✓	✓		
Government Facilities	Department of Homeland Security, General Services Administration	Sector does not have an SCC	✓		
Transportation Systems <sup>i</sup>	Department of Homeland Security, Department of Transportation	Various SCCs are broken down by transportation mode or subsector.	✓		

<sup>i</sup> Indicates that a sector (or a subsector within the sector) has a designated information-sharing organization.



Homeland Security

# NIPP Sector Partnership

- Critical infrastructure sector partners organize under the structure laid out in the NIPP
  - Sector Partnership benefits:
    - Prioritized assistance from Federal government for Sector/Subsector risk management efforts
    - Coordinated information sharing between Federal government, SLTT governments, and private sector partners
    - Voluntary participation



**Homeland  
Security**



# Sector Partnership Model

- Sectors and subsectors establish governance based on coordinating councils
  - Government Coordinating Council (GCC) – enables cross-jurisdictional and interagency coordination; government counterpart to SCC
  - Sector Coordinating Council (SCC) – industry’s principal entity for coordinating with government on CI issues
    - Self-organized, self-run, and self-governed
    - Broad representation of owners, operators, associations



**Homeland  
Security**

# EI Subsector Formation Update

- Election Critical Infrastructure Working Group (ECIWG)
  - Participants include organizational representatives from: National Association of Secretaries of State; National Association of State Election Directors; State and Local jurisdictions; DHS; Election Assistance Commission
  - Have been meeting to develop GCC Charter and membership governance structure
  - Official GCC formation/first meeting anticipated mid-October 2017
  - Initiatives: strategic planning and objectives; information sharing protocols; incident management protocols; tabletop exercise
- SCC formation
  - Met with voting system manufacturers in Anaheim, CA in August to gauge interest in participation



**Homeland  
Security**



# Homeland Security